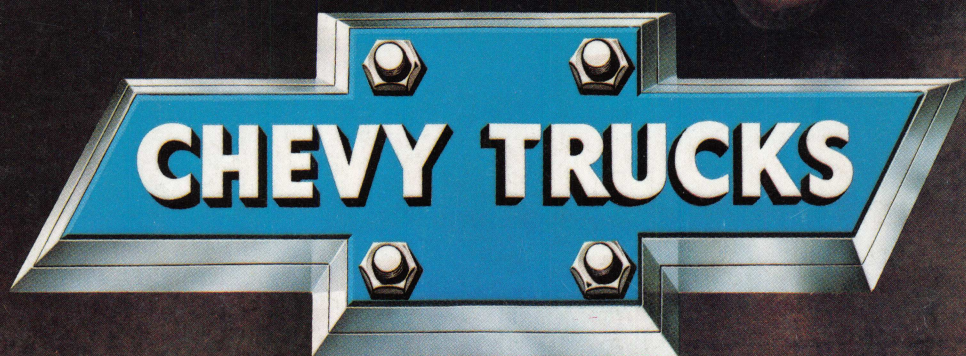


# '79 SUBURBAN



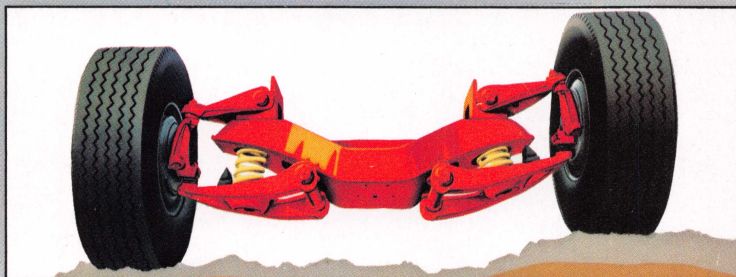
**BUILT TO STAY TOUGH.**



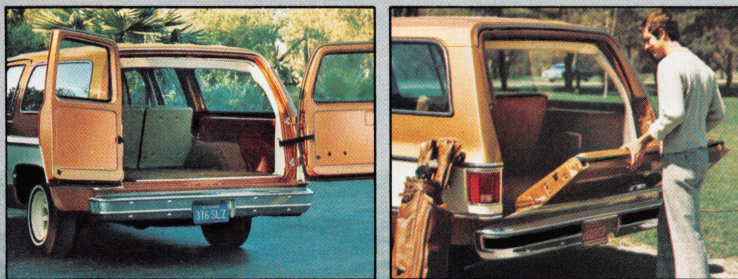
**Built to stay tough.** Chevy Suburban. You know it as the Superwagon that seats up to 9 people with available seating. Converts quickly to a roomy cargo carrier. And, when properly equipped, tows heavy trailers with ease. But underneath it all, Suburban is one tough truck. With a tough truck suspension, computer-matched brake system, rugged ladder-type frame and available 4-wheel drive. And like all Chevy trucks, it's built tough to lead a hardy life.

**The Superwagon for super towing.** If trailer towing is your game, you've come to the right wagon. A properly equipped Series C20 Suburban can actually move up to 15,000 lbs.\* including the Suburban itself, passengers, cargo and the trailer. No ordinary wagon even comes close—in towing capacity, room, or solid truck build.

\*7000-lb.-capacity weight-distributing hitch platform is available through Chevrolet. Larger capacity platforms are available from outside sources.



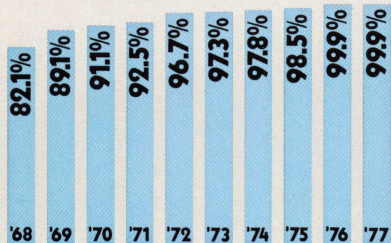
**Massive Girder Beam front suspension.** Here's what tough is all about. A massive structural steel girder beam anchors Suburban's rugged suspension on 2-wheel-drive models. Steel control arms and coil springs at each end allow wheels to move independently for a smooth, level ride.



**Double rear doors standard. Wagon-type tailgate available.** Suburban's dual rear doors swing all the way open for easy loading, providing an opening nearly 40" high and 60" wide. A bottom-hinged tailgate with manual or electrically operated rear window is also available.







**A word about this catalog:** We have tried to make this catalog as comprehensive and factual as possible. And we hope you find it helpful. However, since the time of printing, some of the information you'll find here may have been updated. Your dealer has details and, before ordering, you should ask him to bring you up to date.

**A tough record to beat.** 95.3% of all Chevy trucks, in the ten most recent years recorded, were still on the job. This is based on the latest available industry model year registration statistics through July 1, 1977.

R. L. Polk & Co., July 1, 1977. 1978 statistics not available.



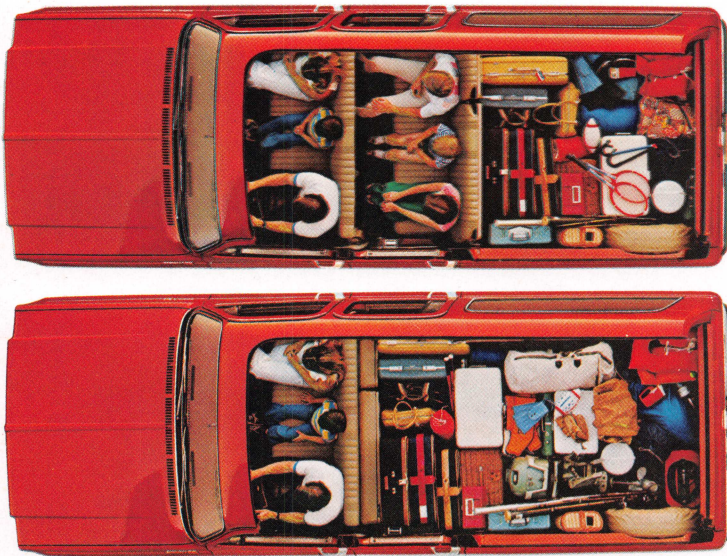
(Above) C20 Silverado Suburban.  
(Shown on cover) C10 Silverado Suburban.



## Available seating for up to 9. Payloads up to 3,130 lbs.

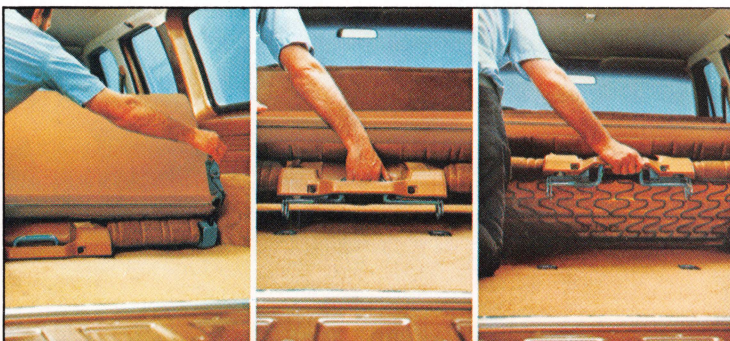
The Suburban interior combines bold good looks with exceptional versatility. The wide front seat can handle three people in comfort. An available folding second seat makes room for three more. And with the available third seat, you can seat nine people. All facing forward.

If you want load space, you have it. With the second seat folded and the third seat



out, there's room for 144 cu. ft. of cargo—up to 3130 lbs. of payload. With the second seat up and third seat removed, there's 92.8 cu. ft., and with the third seat installed, 35 cu. ft.

Many vehicles in this catalog are shown with available factory-installed options, dealer accessories and specialized equipment from various independent suppliers.



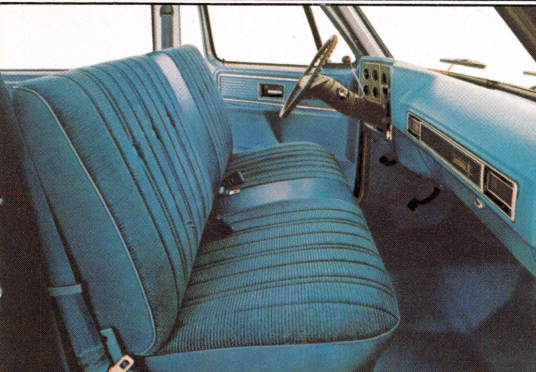
**New for '79. Quick-release third seat.** Suburban's available rear seat can be easily removed by releasing cam-type rear latches and sliding seat forward off front anchors. A folding backrest feature facilitates removal and storage.



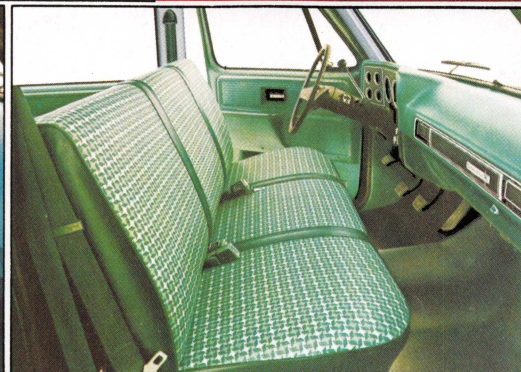




**Silverado interior.** The available top-of-the-line interior comes with a full-depth foam-cushioned front seat upholstered in either soft velour cloth or supple oxenhide-grained vinyl. Also included are full door-trim panels, bright, brushed instrument cluster frame and needle-type full-gage instrumentation. Under-foot, there's color-keyed cut-pile carpeting. Attractive Two-Tone interiors are offered for '79 which combine Mystic with Blue, Camel Tan or Carmine colors. Available with cloth seat trim only. Single-tone interiors are also available. Available options shown.



**Scottsdale interior.** This available interior features a full-depth foam-cushioned front seat with handsome embossed vinyl trim. Custom velour cloth upholstery and custom vinyl seat trim are available. Also included is a full-length insulated headliner. Available options shown.



**Custom Deluxe interior.** Suburban's standard interior has a full-depth foam-cushioned front seat trimmed in patterned embossed vinyl. Standard features also include cockpit-type instrument cluster and instrument panel pad with bright-trimmed black applique, as well as padded sunshades. Available options shown.



**High-back bucket seats.** Available with Silverado trim, Suburban's high-back buckets feature full-foam seat construction on a rugged steel frame for good support. Driver's seat is adjustable fore and aft to permit a choice of driving positions. Available options shown.



## Super traction. On and off the road.

A wide range of available equipment makes Suburban a real performer in the boondocks as well as the boulevard. Four-wheel drive, V8 power up to 7.4 Litres (454 Cu. In.) on 2WD models, locking differential rear axle, engine oil cooler and a long list of available equipment let you spec out a Suburban for your kind of action. Power steering is standard on 4WD models.

**Full-time 4-wheel drive.** It's the system you get when you order a 4WD Suburban with available automatic transmission. Chevy's full-time 4-wheel drive has an interaxle differential built into the transfer case that allows the system to remain in 4-wheel drive both on and off the road.

This gives you the traction you need for off-road going, plus good tracking under varying road conditions.

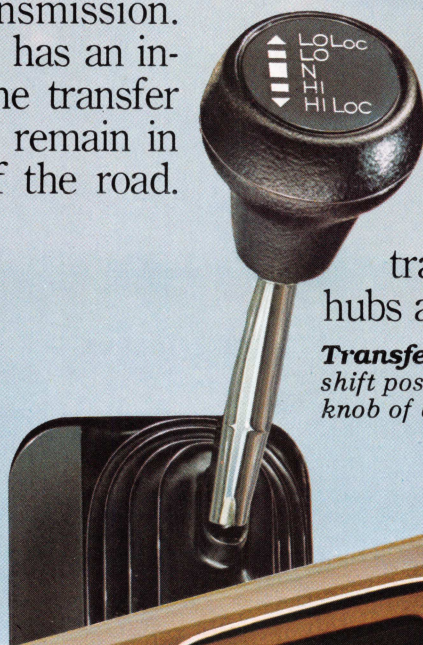
### Conventional 4-wheel drive.

The conventional system is standard on 4-wheel-drive Suburbans when equipped with 3-speed or 4-speed manual transmissions. Front free-wheeling hubs are included.

**Transfer case shift lever.** The five shift positions are indicated on the shift knob of both 4WD systems.



**Low entry height, high ground clearance.** With the transfer case mounted directly to the transmission, Suburban's entry height is only 21.5 to 23 inches depending upon model selected. Despite this low silhouette, there is 7.2 in. of ground clearance for off-road travel.





**A word about engines.** The Chevrolet trucks in this catalog are equipped with GM-built engines produced by various divisions. Please refer to the engine chart on this page and see your dealer for complete details about engine sources and availability.

**Four tough V8 engines.** The 5.0 Litre (305 Cu. In.) V8 with new Dualjet carburetor is standard on K10 and C20 models and available for C10 models (except in Calif.). The more powerful 5.7 Litre (350 Cu. In.) V8 is standard on K20 Suburbans and available for all other models. A 6.6 Litre (400 Cu. In.) V8 is also available for K10-20 models and a big-block 7.4 Litre

(454 Cu. In.) V8 is available for C10-20. **Dependable Six power.** The 4.1 Litre (250 Cu. In.) Six is standard on C10 Series Suburbans (not available in California). This engine features a new staged 2-barrel carburetor, seven main bearings and cast-iron cylinder heads.

#### Engine Specifications

DISPLACEMENT— LITRE(CU.IN.)	ENGINES FOR ALL STATES EXCEPT CALIFORNIA				
	4.1L(250CID) L6	5.0L(305CID) V8	5.7L(350CID) V8	6.6L(400CID) V8	7.4L(454CID) V8
ENGINE ORDERING CODE	LE3(B)	LG9(C)	LS9(C)	LF4(B)	LF8(B)
BORE & STROKE (in.)	3.9 x 3.5	3.7 x 3.5	4.0 x 3.5	4.1 x 3.8	4.3 x 4.0
COMPRESSION RATIO	8.3 to 1	8.4 to 1	8.2 to 1	8.2 to 1	8.0 to 1
SAE NET HP @ rpm	130 @ 4000	140 @ 4000	165 @ 3600	185 @ 3600	205 @ 3600
SAE NET TORQUE (lb.-ft.) @ rpm	210 @ 2000	240 @ 2000	270 @ 2000	300 @ 2400	335 @ 2800

DISPLACEMENT— LITRE(CU.IN.)	ENGINES FOR CALIFORNIA ONLY		
	5.7L(350CID) V8	6.6L(400CID) V8	7.4L(454CID) V8
ENGINE ORDERING CODE	LS9(C)	LF4(B)	LF8(B)
BORE & STROKE (in.)	4.0 x 3.5	4.1 x 3.8	4.3 x 4.0
COMPRESSION RATIO	8.2 to 1	8.2 to 1	8.0 to 1
SAE NET HP @ rpm	155 @ 3600	170 @ 3600	205 @ 3600
SAE NET TORQUE (lb.-ft.) @ rpm	260 @ 2000	305 @ 1600	335 @ 2800

(B) Produced by GM—Chevrolet Motor Division at the Flint, Michigan Engine Plant.

(C) Produced by GM—Chevrolet Motor Division at the Flint, Michigan, Tonawanda, New York, and GM of Canada Engine Plants.

*K20 Silverado Suburban.*





## Built tough. Through and through.

Outside and underneath, you'll find the kind of tough truck features that help Chevy Suburban handle the big towing and hauling jobs, day in and day out, year after year.

**Tough truck frame.** Ladder-type all-steel frame is forged from the same type of steel used in big Chevy medium-duty trucks. Deep-section channel side rails are strong and durable.

**Massive Girder Beam front suspension.** It's made tough to stand up to rough going on rough roads. A massive steel beam forms the foundation for Chevy's independent front suspension on 2-wheel-drive models. Two contoured steel control arms with friction-free coil springs are attached to each end to permit front wheels to step independently over the rough spots to help smooth the ride.

**Computer-matched brake system.** Power assisted front disc and rear drum brakes are incorporated into a complete system which is computer-matched to the gross vehicle weight rating of the Suburban you order. Lining areas, size and capacity of power assist, wheel cylinder size are preselected at the factory. Front disc brake lining wear indicators give audible signal when pads need replacing.

**Delco Freedom battery.** Suburban's standard battery never needs refilling. Side terminals help prevent corrosion, maintain efficient electrical contact. Heavy-duty and auxiliary Freedom batteries available.

**Aluminized muffler.** Outer shell and interior

baffles are heavy-gage metal, aluminized inside and out to help protect against corrosion.

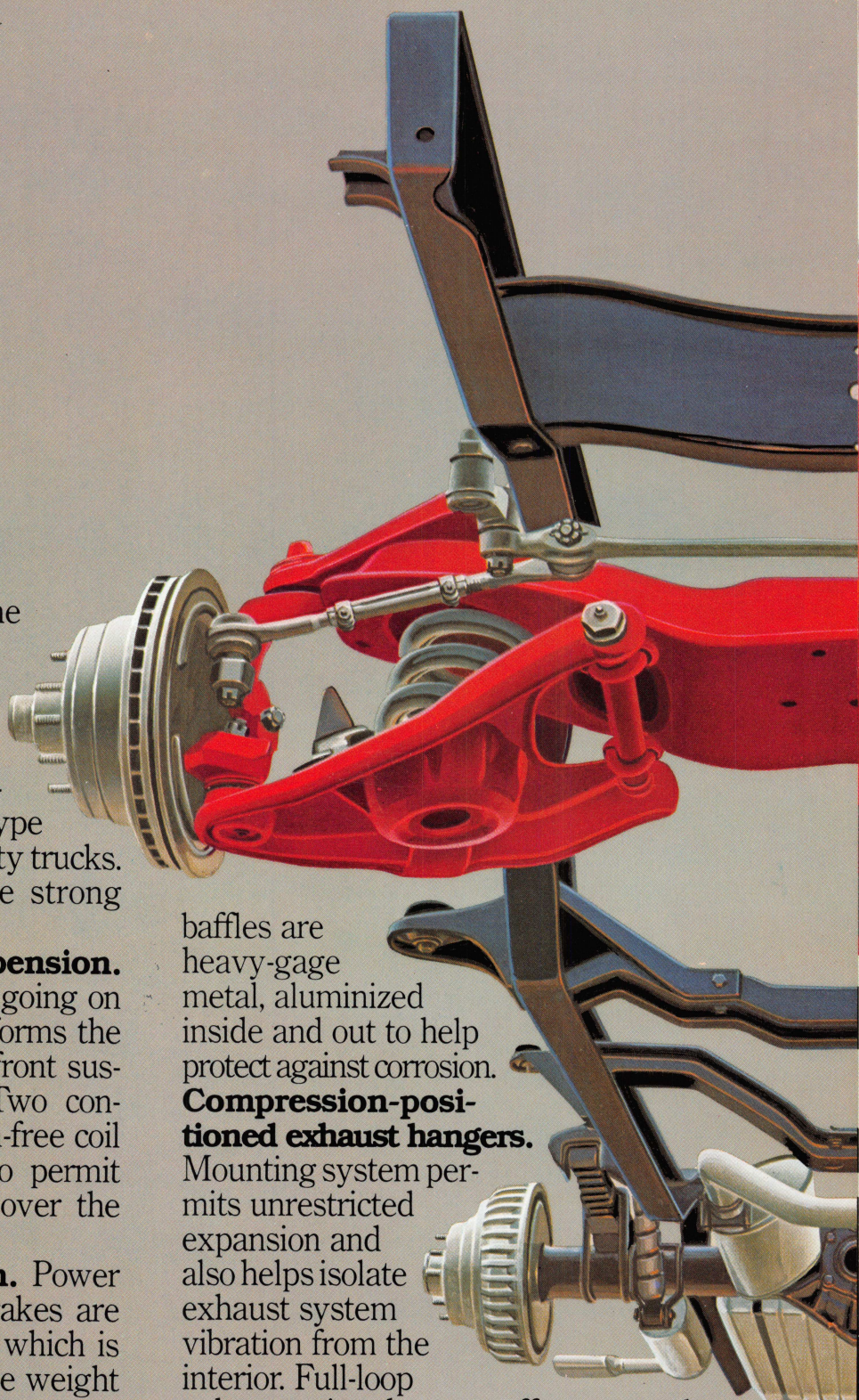
### **Compression-positioned exhaust hangers.**

Mounting system permits unrestricted expansion and also helps isolate exhaust system vibration from the interior. Full-loop exhaust pipe hanger offers secondary support.

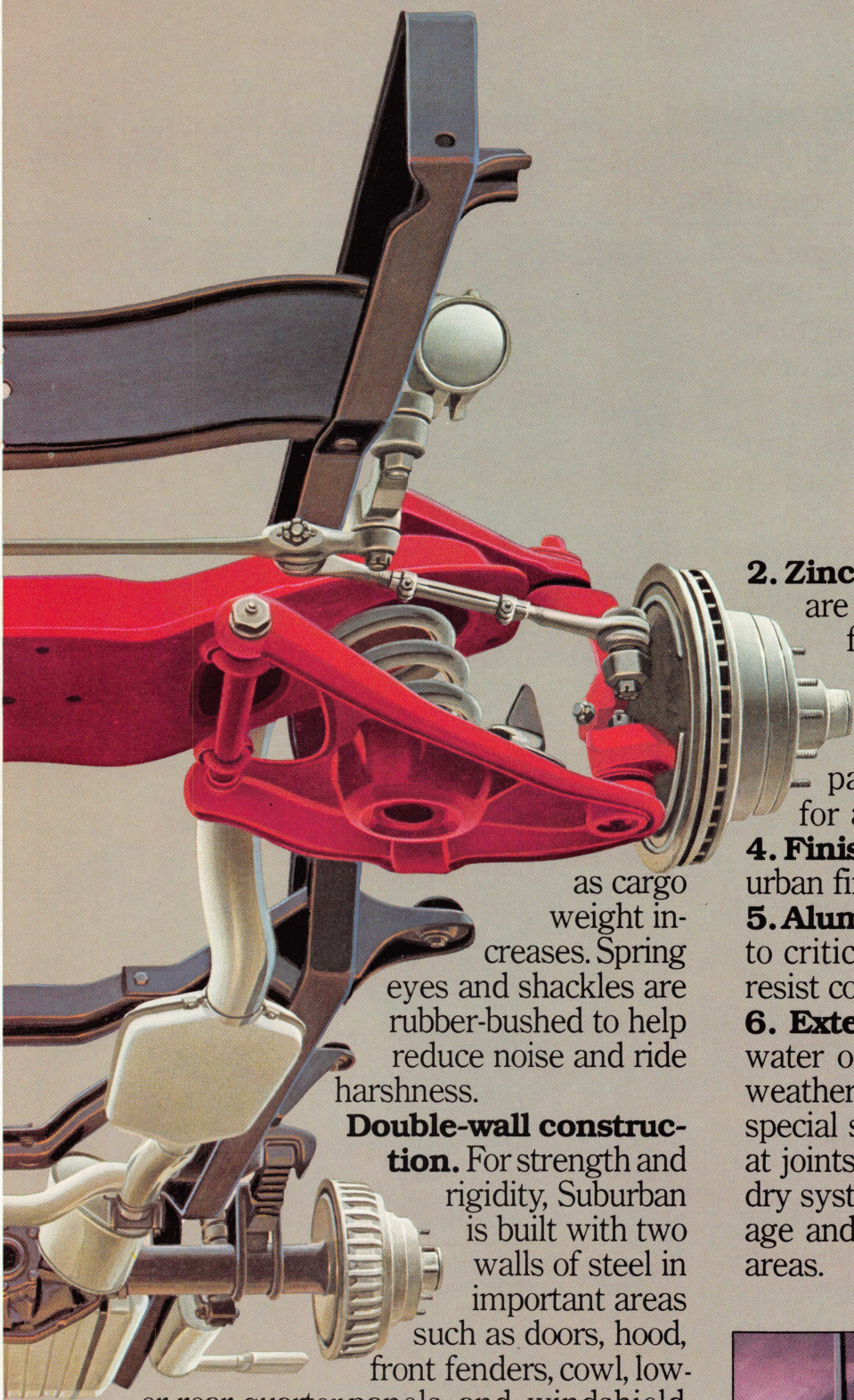
**Salisbury rear axle.** Features include the use of a large ring gear and roller bearings, broad ratio coverage, easy access for service.

**Finned rear brake drums.** Cast iron-steel rear brake drums are finned to promote cooling. Outer edges are curved to help keep contaminants from linings.

**Multi-leaf rear springs.** Provide a good ride with light loads, progressively firmer support







as cargo weight increases. Spring eyes and shackles are rubber-bushed to help reduce noise and ride harshness.

**Double-wall construction.** For strength and rigidity, Suburban is built with two walls of steel in important areas such as doors, hood, front fenders, cowl, lower rear quarter panels and windshield pillars. It's one tough kind of tough.

**Extensive anti-corrosion program.** The 1979 get-tough six-point program has one aim—to help keep your Suburban looking good. Here are the basic elements:

**1. Greater use of corrosion-resistant steels.** For 1979, more Zincrometal®, more galvanized steel, more zinc alloy steel, more zinc-plated parts are used than last year.

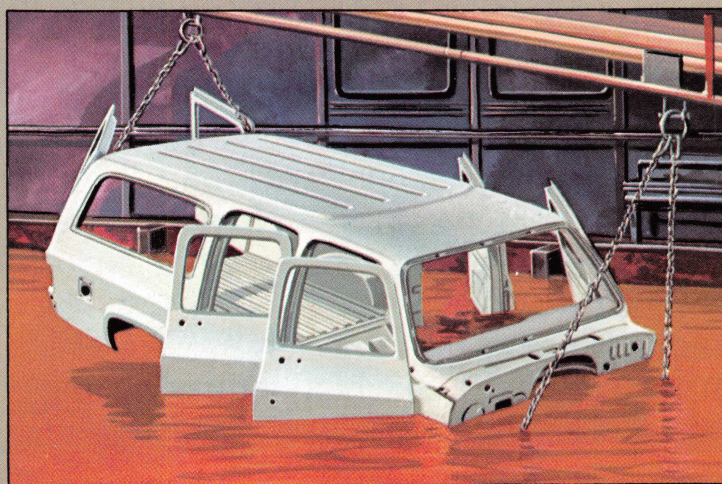
**2. Zinc-rich anti-corrosion primers.** These are hand sprayed on critical areas before final priming.

**3. Final priming.** Every Suburban body is totally immersed in primer and electrically charged—drawing paint into hidden seams and crevices for added corrosion protection.

**4. Finish painting.** That beautiful Chevy Suburban finish is tough baked-on acrylic enamel.

**5. Aluminized wax preservative.** It's applied to critical lower body inner surfaces to help resist corrosion from road salt.

**6. Extensive weatherproofing.** Helps keep water out with liberal use of fat butyl rubber weather stripping around doors and windows, special sealing compounds and rubber gaskets at joints and light enclosures, and a flush-and-dry system that provides for quick water drainage and air drying between some double-wall areas.





**Super selection of available options.** Just about everything you could want in the way of available options can be installed at the factory or by your dealer. Following is a list of some of the more popular Suburban options.

**Speed and cruise control.** Engages at a touch to maintain a preset speed, disengages as soon as brake pedal is applied. Available only with V8 engine and automatic transmission.

**Automatic transmission.** Includes anti-theft lock-in steering column. Standard on C20 models.

**Towing equipment suggestions.** The Trailering Special Package is highly recommended for towing applications. It includes power steering (2WD models), heavy-duty battery and generator and required V8 engine/axle ratio combination suitable for the trailer you plan to tow. 4-speed or automatic transmission also required. (Trailer hitch not included.)

The following available options are recommended for trailer towing: engine oil cooler, locking differential rear axle, trailer weight-distributing hitch platform, trailer wiring harness and camper-type mirrors.

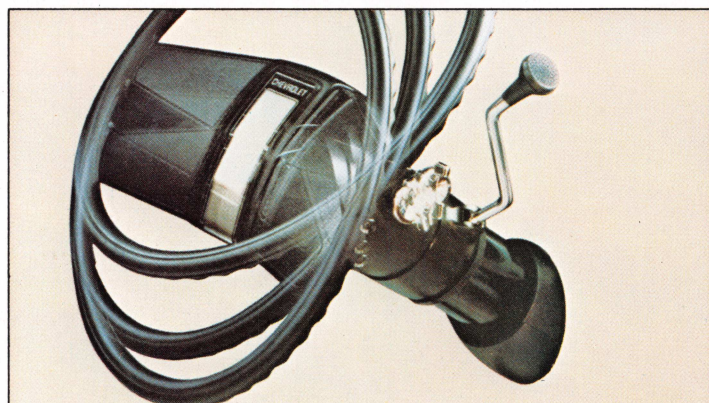
**Special Two-Tone paint.** Frost White or other secondary color between upper and lower body side moldings.

**Below Eyeline mirrors.** Rubber bushing on support arm helps provide stable support for large mirror head which pivots inward for added clearance. Available in stainless steel or painted finish.

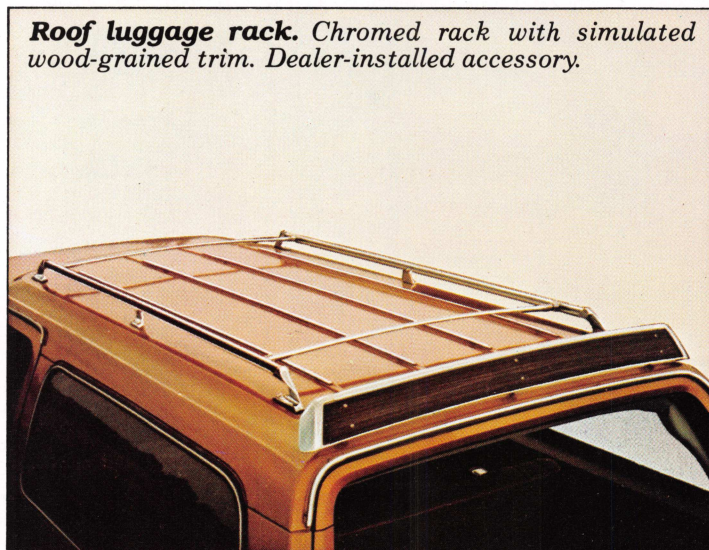
**Plus . . .** Power steering (2WD models), power tailgate window, heavy-duty power brakes (C-K20 models), chromed grille, Soft-Ray tinted glass, deluxe bumpers, body side moldings, gages, electric clock, 31- and 40-gallon fuel tanks, heavy-duty radiator, heavy-duty shocks (2WD models), front stabilizer bar, heavy-duty springs, fuel tank shield plate, weight-distributing trailer hitch, wide range of tires.



**Wheels and wheel trim.** Depending upon model, chrome trim rings, full wheel covers, styled wheels and Rally wheels (shown above) are available.



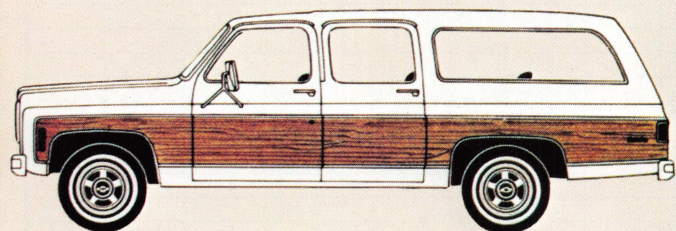
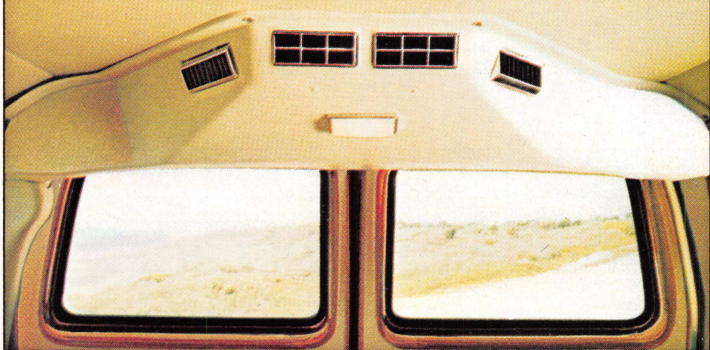
**Comfortilt steering wheel.** Flick a lever and swing the Comfortilt wheel up, down and in between. You can change to six different driving positions without ever leaving your seat. Available when automatic or 4-speed manual transmission is ordered.



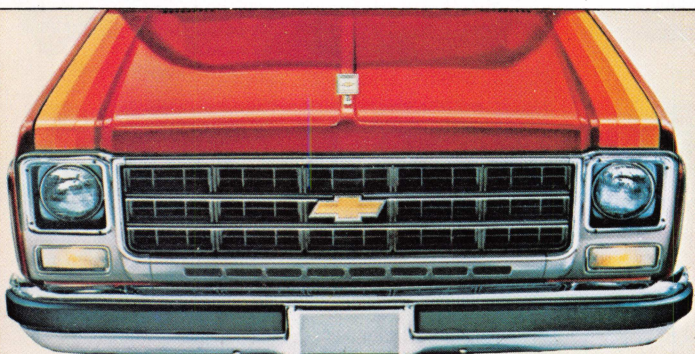
**Roof luggage rack.** Chromed rack with simulated wood-grained trim. Dealer-installed accessory.



**Dual-unit front and rear air conditioning.** All Weather air conditioning up front handles heating, defogging and cooling, using outside air. Inside roof-mounted rear unit recirculates inside air. You can operate front and rear independently.



**Simulated wood-grain trim.** Simulated wood-grain appliques between upper and lower side and rear moldings. Includes Estate nameplates on rear quarter panels.



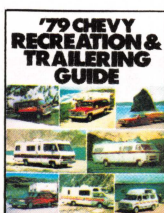
**Exterior Decor Package.** Choice of six exterior Two-Tone combinations using accent stripes on each side of the hood in shades of blue, red or yellow. Package includes upper and lower body side and rear moldings and stand-up hood ornament. Secondary color used on hood and between side moldings.

## A WORD ABOUT COMPONENTS, OPTIONAL EQUIPMENT, ASSEMBLY AND AVAILABILITY OF THESE CHEVROLETS.

These Chevys incorporate thousands of different components produced by various divisions of General Motors and by various suppliers to General Motors. From time to time during the manufacturing process it may be necessary in order to meet public demand for particular vehicles or equipment or to meet federally mandated emissions, safety and fuel economy requirements or for other reasons to produce these products with different components or differently sourced components than initially scheduled. All such components have been approved for use in these products.

With respect to factory-installed extra cost optional equipment, make certain you specify the type of equipment you desire on your vehicle when ordering it from your dealer. Some options may be unavailable when your vehicle is built. Your dealer receives advice regarding current availability of options. You may ask the dealer for this information. GM also requests the dealer to advise you if an option you ordered is unavailable. We suggest you verify that your vehicle includes the optional equipment you ordered or, if there are changes, that they are acceptable to you.

The Chevy Suburbans described in this brochure (Series C10, C20, K10 and K20) are assembled at facilities of General Motors Corporation operated by Chevrolet Motor Division. These vehicles are also available from GMC dealers under the GMC nameplate (GMC Suburban Series C1500, C2500, K1500, and K2500).



Ask your dealer for his special Chevy Recreation and Trailering Guide.



## Specifications

SERIES	C10 (½ TON)				C20 (¾ TON)			K10 (½ TON) 4-WHEEL DRIVE			K20 (¾ TON) 4-WHEEL DRIVE			
GVW RANGE (LB)	6050 to 7000				7100 to 8200			6200 to 7300			6800 to 8400			
AVAILABILITY	Standard	Available			Standard	Available		Standard	Available		Standard	Available		
ENGINE	4.1L (250CID)	5.0L (305CID)*	5.7L (350CID)	7.4L (454CID)	5.0L (305CID)*	5.7L (350CID)	7.4L (454CID)	5.0L (305CID)*	5.7L (350CID)	6.6L (400CID)	5.0L (305CID)*	5.7L (350CID)	6.6L (400CID)	
CLUTCH DIA. (IN.)	11	11			11	11		11	11		12	12		
FRONT SUSPENSION	Type/Spring	Independent-Coil Springs						Hypoid Driving Axle—Leaf Springs						
	Capacity (lb)	3400	—			3800	—		3600	—		3800	—	
	Spring Capacity (lb. ea.)	1625	1700			1750	1900		1850	2250		1850	2250	
	Shock Absorbers	25mm dia.	32mm dia.			1" dia.	32mm dia.		25mm dia.	32mm dia.		25mm dia.	32mm dia.	
	Stabilizer Bar	Available						1.25"	—		1.25"	—		
REAR SUSPENSION	Axle Type	Semi-Floating			Full-Floating			Semi-Floating			Full-Floating			
	Capacity (lb)	3750	—			5700	—		4000	—		5700	—	
	Ratios	3.40	2.76, 3.07, 3.40, 3.73, 4.11			4.10	3.21, 3.73, 4.10		3.40	2.76, 3.07, 3.40, 3.73		3.73	3.73, 4.10	
	Spring Type	Two-Stage Multi-Leaf						Two-Stage Multi-Leaf						
	Spring Capacity (lb. ea.)	2000	—			2000	2600, 2850		2000	—		2100	2800	
BRAKES	Shock Absorbers	25mm dia.	32mm dia.			1" dia.	32mm dia.		25mm dia.	32mm dia.		25mm dia.	32mm dia.	
	Disc/Drum	Power	—			Power	H.D. Power		Power	—		Power	H.D. Power	
ELECTRICAL	Battery (watts)	2500	3200, 3500, 4000			3200	3500, 4000		3200	3500, 4000		3200	3500, 4000	
	Generator (amp)	37	55, 63			37	55, 63		37	55, 63		37	55, 63	
FUEL TANK	Nominal Capacity	25	31, 40			25	31, 40		25	31, 40		25	31, 40	
STEERING	Type	Manual	Power			Manual	Power		Power	—		Power	—	
TRANSMISSION	Manual	3-Spd.	4-Spd.			—	4-Spd.		3-Spd.	4-Spd.		3-Spd.	4-Spd.	
	Automatic	—	Automatic			Automatic	—		—	Automatic		—	Automatic	
TRANSFER CASE	—	—			—	—		Conventional	Full-Time		Conventional	Full-Time		
TIRE SIZE, TUBELESS	H78-15B	●			8.75-16.5C	●		H78-15B	●		8.75-16.5C	●		
● Larger Size Tubeless and Tube-Type Tires Available														

• Larger Size Tubeless and Tube-Type Tires Available

\*Not Available in California

Tire load range—B (4PR), C (6PR)

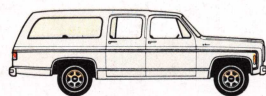
\*\*12" clutch included with 5.7L(350CID) 7.4L(454CID) V8 engines

## Trailering Special Packages

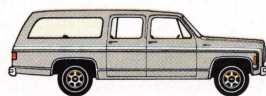
GCWR† IN POUNDS BY AXLE RATIO		8000	8500	9000	9500	10,000	10,500	11,000	11,500	12,000	12,500	13,000	13,500	15,000
REQUIREMENTS:														
ENGINE: 5.0L (305 CID) V8*	C10	3.40	—	3.73	—	4.11	—	—	—	—	—	—	—	—
	C20	—	—	—	—	4.10	—	—	—	—	—	—	—	—
	K10	3.40	—	3.73	—	—	—	—	—	—	—	—	—	—
5.7L (350 CID) V8	C10	—	—	3.07	—	3.40	—	3.73	—	4.11	—	—	—	—
	C20	—	—	—	—	—	—	3.73	—	4.10	—	—	—	—
	K10	2.76	—	3.07	—	3.40	—	3.73	—	—	—	—	—	—
	K20	—	—	—	—	—	—	3.73	—	4.10	—	—	—	—
6.6L (400 CID) V8	K10	—	2.76	—	3.07	3.40	—	3.73	—	—	—	4.10*	—	—
	K20	—	—	—	—	—	—	3.73	—	—	—	—	—	—
7.4L (454 CID) V8	C10	—	—	—	—	2.76	—	3.07	—	3.40	—	—	3.73	—
	C20	—	—	—	—	—	—	—	—	3.21	—	—	3.73	4.10
TRANSMISSION	ALL	AUTOMATIC (ALL ENGINES) OR 4-SPEED (C10 WITH 5.0L [305 CID]; ALL WITH 5.7L [350 CID])												
RADIATOR	C10	AIR CONDITIONING OR H.D. RADIATOR												
	K10	AIR CONDITIONING OR H.D. RADIATOR (EXCEPT WITH 6.6L [400 CID])												
	C-K20	AIR CONDITIONING OR H.D. RADIATOR (EXCEPT WITH AUTOMATIC TRANSMISSION)												
GVWR	C10	6800 OR 7000 LBS.												
	K10	6800 OR 7300 LBS.												
GCWR SHOWN ON TRAILERING SPECIAL NAMEPLATE		8000	9000	10,000	11,500	12,000	13,000	15,000						

†GROSS COMBINED WEIGHT OF VEHICLE, TRAILER, CARGO AND OCCUPANTS.

\*NOT AVAILABLE IN CALIFORNIA.



Frost White



Mystic Silver



Charcoal



Hawaiian Blue



Mariner Blue



Deep Blue



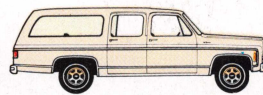
Shamrock Green



Holly Green



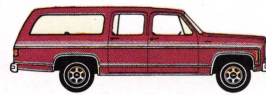
Colonial Yellow



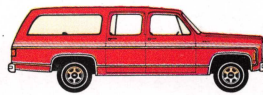
Santa Fe Tan



Light Camel



Dark Carmine Red



Cardinal Red



Cordova Brown



Midnight Black

The right is reserved to make changes at any time, without notice, in prices, colors, materials, equipment, specifications and models, and to discontinue models. Check with your Chevrolet dealer for complete information. Chevrolet Motor Division of General Motors Corporation, Detroit, Michigan 48202. Litho in U.S.A.

